

20' ISO GAS-TANKCONTAINER | 20' ISO GAS TANK CONTAINER



24.600 Liter ortsbeweglicher Gas-Tankcontainer, Typ T50, ADR/RID

24,600 liter portable gas tank container, type T50, ADR/RID

Technische Daten | technical details

■ Typ Type	20' ISO Gas-Tankcontainer 20' ISO gas tank container	■ Stärke der Tankwand Shell manufacturing thickness	17 mm 17 mm
■ Nominale Kapazität Nominal Capacity	24.600 l 24,600 l	■ Metallurgische Auslegungstemperatur Metallurgic Design Temperatur for Tank	-40 bis +55°C -40 to +55°C
■ Gesamtgewicht Max. gross weight	36.000 kg 36,000 kg	■ Max. zulässiger Betriebsdruck Maximum allowable working pressure	25,7 bar 25.7 bar
■ Eigengewicht Tare Weight	8.100 kg 8.100 kg	■ Prüfdruck Test pressure	34,2 bar 34,2 bar
■ Länge Lenght	6.058 mm 6,058 mm	■ Werkstoff Shell material	Kohlenstoffstahl SA-612M N Carbon steel SA-612M N
■ Breite Width	2.438 mm 2,438 mm		
■ Höhe Height	2.591 mm 2,591 mm		

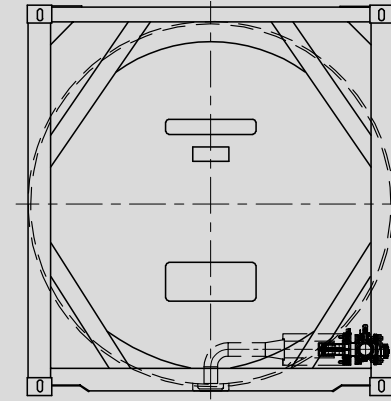
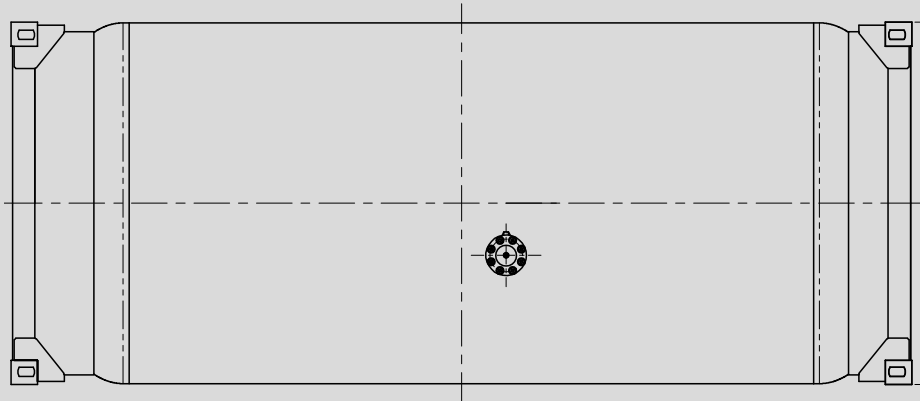
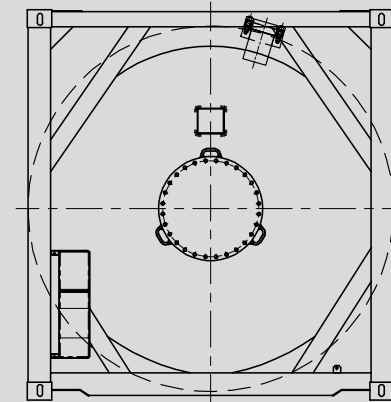
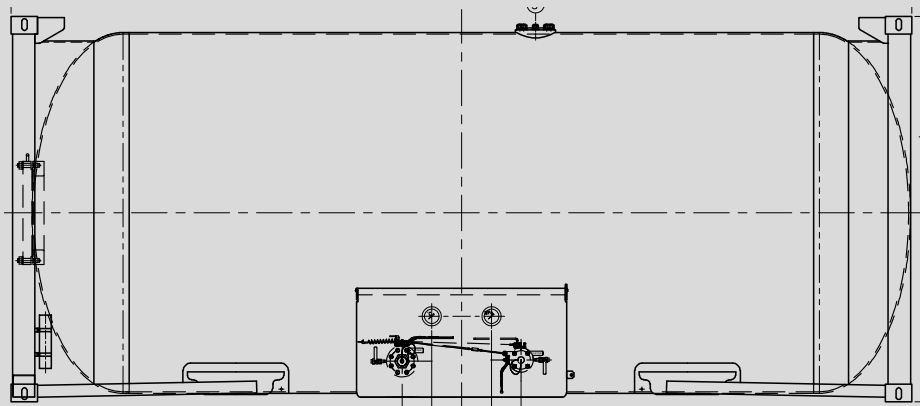
VTG Rail Europe GmbH
Nagelsweg 34
20097 Hamburg
Germany

Tel.: +49 40 2354-0
info@vtg.com
www.vtg.com

20' ISO GAS-TANKCONTAINER | 20' ISO GAS TANK CONTAINER



24.600 Liter ortsbeweglicher Gas-Tankcontainer, Typ T50, ADR/RID
24,600 liter portable gas tank container, type T50, ADR/RID



20' ISO GAS-TANKCONTAINER | 20' ISO GAS TANK CONTAINER



24.600 Liter ortsbeweglicher Gas-Tankcontainer, Typ T50, ADR/RID

24,600 liter portable gas tank container, type T50, ADR/RID

PRODUCTS LIST FOR 24,600 LITERS T50 UN PORTABLE TANK CONTAINER		
UN No.	PROPER SHIPPING NAME	MAX. PERMISSIBLE LOAD MASS(kg)
1005	Ammonia, anhydrous	13035
1010	BUTADIENES, STABILIZED	13530
1011	BUTANE	12545
1012	BUTYLENE	13035
1018	Chloropentafluoroethane(R22)	25335
1021	1-Chloro-1,2,2,2-tetrafluoroethane(R124)	25900
1027	Cyclopropane	13035
1028	Dichlorodifluoromethane(R12)	25900
1029	Dichlorofluoromethane(R21)	25900
1030	1,1-Difluoroethane(R152a)	19435
1032	Dimethylamine, anhydrous	14515
1033	Dimethyl ether	14265
1036	Ethylamine	15005
1037	Ethyl chloride	19680
1055	Isobutylene	12790
1960	Methylacetylene and propadiene mixture, stabilized	10575
1961	Methylamine, anhydrous	14265
1963	Methyl chloride(R40)	19925
1075,1077	LPG, Propylene	10575
1075,1978	LPG, Propane	10330
1083	Trimethylamine, anhydrous	13775
1085	Vinyl bromide, stabilized	25900
1086	Vinyl chloride, stabilized	19925
1087	Vinyl methyl ether, stabilized	16480
1965	Hydrocarbon gas mixture (10%Propane, 90%Butane)	12300
1965	Hydrocarbon gas mixture (20%Propane, 80%Butane)	12055
1965	Hydrocarbon gas mixture (24%Propane, 76%Butane)	12055
1965	Hydrocarbon gas mixture (30%Propane, 70%Butane)	11805
1965	Hydrocarbon gas mixture (40%Propane, 60%Butane)	11805
1965	Hydrocarbon gas mixture (50%Propane, 50%Butane)	11805
1965	Hydrocarbon gas mixture (60%Propane, 40%Butane)	11560
1965	Hydrocarbon gas mixture (70%Propane, 30%Butane)	11315
1965	Hydrocarbon gas mixture (80%Propane, 20%Butane)	11070
1965	Hydrocarbon gas mixture (90%Propane, 10%Butane)	10825
1965	Hydrocarbon gas mixture (All percentages Propane/Butane)	10330
1965	Hydrocarbon gas mixture (75%isopentane, 25%isobutane)	13285
1965	Hydrocarbon gas mixture (5%Ethane, 95%Propane)	10330
1969	ISOBUTANE	12055
2517	1-CHLORO-1,1-DIFLUOROETHANE(R142b)	24355
2602	R12 (74%)/R152a Mixture(R500)	24845
3159	1,1,1,2-TETRAFLUOROETHANE(R134a)	25584
3161	REFRIGERANT GAS R134a/DME(65/35)	19435
3161	REFRIGERANT GAS R134a/DME(70/30)	20170
3161	REFRIGERANT GAS R134a/DME(75/25)	20910
3161	REFRIGERANT GAS R134a/DME(93/7)	24105
3161	REFRIGERANT GAS R134a/DME(DME<7%)	24355
3161	REFRIGERANT GAS R134a/R152a(25/75)	20665
3161	REFRIGERANT GAS R134a/R152a(30/70)	20910
3161	REFRIGERANT GAS R134a/R152a(40/60)	21400
3161	REFRIGERANT GAS R134a/R152a(50/50)	22140

PRODUCTS LIST FOR 24,600 LITERS T50 UN PORTABLE TANK CONTAINER		
UN No.	PROPER SHIPPING NAME	MAX. PERMISSIBLE LOAD MASS(kg)
3161	REFRIGERANT GAS R134a/R152a(70/30)	23370
3161	REFRIGERANT GAS R134a/R152a(75/25)	23860
3161	REFRIGERANT GAS R134a/R152a(80/20)	24600
3161	REFRIGERANT GAS R134a/R152a(86/14)	24600
3161	REFRIGERANT GAS R134a/R152a/DME(33/53/14)	19680
3161	REFRIGERANT GAS R152a/DME(30/70)	15495
3161	REFRIGERANT GAS R152a/DME(75/25)	17710
3161	REFRIGERANT GAS R152a/DME(80/20)	17955
3161	REFRIGERANT GAS R152a/DME(85/15)	18450
3161	REFRIGERANT GAS R152a/DME(90/10)	18695
3161	REFRIGERANT GAS DME/ISOBUTANE(10/90)	12300
3161	REFRIGERANT GAS DME/ISOBUTANE(20/80)	12545
3161	REFRIGERANT GAS DME/ISOBUTANE(30/70)	12790
3161	REFRIGERANT GAS DME/ISOBUTANE(40/60)	13035
3161	REFRIGERANT GAS DME/ISOBUTANE(50/50)	13285
3161	REFRIGERANT GAS DME/ISOBUTANE(60/40)	13530
3161	REFRIGERANT GAS DME/ISOBUTANE(80/20)	14020
3161	REFRIGERANT GAS DME/ISOBUTANE(90/10)	14265
3161	REFRIGERANT GAS DME/ISOBUTANE(all percentages)	12055
1078/3163	1,1,1,3,3-PENTAFLUOROPROPANE(R245fa)	25900
1078/3163	2,2-Dichloro-1,1,1-trifluoroethane (R123)	25900
1078/3163	REFRIGERANT GAS R134a/DME(95.7/4.3)	24600
1078/3163	REFRIGERANT GAS R134a/DME(96.6/3.4)	24600
1078/3163	REFRIGERANT GAS R134a/DME(DME<7%)	24600
1078/3163	REFRIGERANT GAS R134a/DME(DME<1%)	24600
1078/3163	REFRIGERANT GAS R134a/DME(DME=7%)	24600
1078/3163	REFRIGERANT GAS R134a/R143a(60/40)	22385
1078/3163	REFRIGERANT GAS R134a/R152a(86.1/13.9)	24600
1078/3163	REFRIGERANT GAS R134a/R152a(87/13)	24600
1078/3163	REFRIGERANT GAS R142b/R22(40/60)	24845
1078/3163	REFRIGERANT GAS R142b/R22(60/40)	24845
1078/3163	REFRIGERANT GAS R22/R124/R142b/(65/25/10)	25900
1078/3163	REFRIGERANT GAS R401a	25335
1078/3163	REFRIGERANT GAS R401b	25335
1078/3163	REFRIGERANT GAS R401c	25830
1078/3163	REFRIGERANT GAS R406a	23615
1078/3163	REFRIGERANT GAS R407a	23125
1078/3163	REFRIGERANT GAS R409a	25900
1078/3163	REFRIGERANT GAS R409b	25900
1078/3163	REFRIGERANT GAS R413a	24355
1078/3163	REFRIGERANT GAS R417a	23615
1078/3163	REFRIGERANT GAS R423a	25900

VTG Rail Europe GmbH
Nagelsweg 34
20097 Hamburg
Germany

Tel.: +49 40 2354-0
info@vtg.com
www.vtg.com